

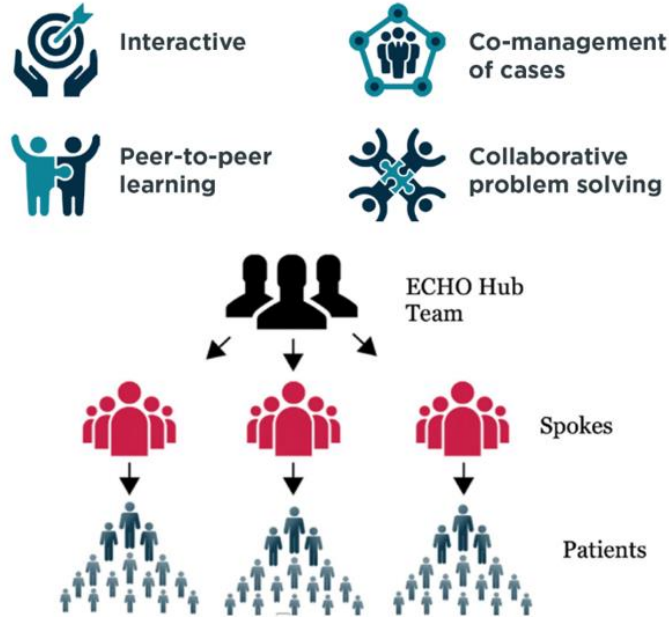
# Project ECHO for Advanced Clinical Practitioners in-reaching into Care Homes

- Creating a community of practice for ACPs in-reaching into care homes
- Sharing Knowledge and Best Practice
- **Register through the following link or QR code:**



<https://forms.office.com/e/X2MJGp4Qhr>

ECHO is all teach, all learn.



Education sessions will be on the following:

- **Advance care planning and best interest decision making**
- Managing neurological conditions
- **Safe prescribing & managing polypharmacy**
- Managing diabetes towards the end of life
- **Heart failure**
- Managing the rapidly deteriorating patient
- **Low mood and isolation in the care home patient**
- Managing pain relief and opioids in the older adult
- First session **4<sup>th</sup> May 15.00-16.30**

Contact [echo@hospicesheffield.co.uk](mailto:echo@hospicesheffield.co.uk) for further details